



Gondwana Collection

NAMIBIA



Gondwana Collection...

Welcome to Namibia - welcome to Gondwana!

The Gondwana Collection consists of 14 exquisite, yet affordable accommodation establishments to suit anybody's taste – each of them with a distinct character of its own and close to one of Namibia's big attractions!

Kalahari Desert

Kalahari Anib Lodge & Campsite (in Gondwana Kalahari Park) • Kalahari Farmhouse & Campsite

Fishriver Canyon & Nama Karoo Desert

Canyon Lodge • Canyon Village • Canyon Roadhouse & Campsite • Canyon Mountain Camp
(in Gondwana Canyon Park)

Wild Horses & Kolmanskop & Succulent Karoo Desert

Desert Horse Inn & Campsite • Geisterschlucht Cabin • Eagles Nest Chalets
(in Gondwana Sperrgebiet Rand Park)

Sossusvlei & Sesriem & Namib Desert

Namib Desert Lodge & Campsite (in Gondwana Namib Park)

Twyfelfontein

Damara Mopane Lodge

Etosha National Park

Etosha Safari Lodge • Etosha Safari Camp & Campsite

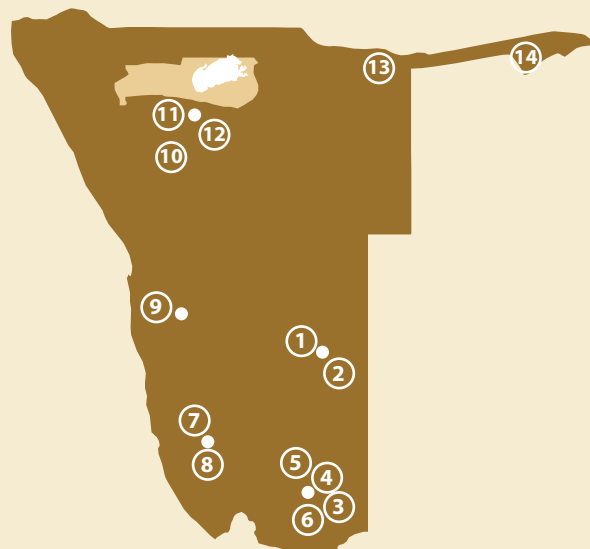
Okavango River

Hakusembe River Lodge & Campsite

Caprivi

Namushasha River Lodge & Campsite

- 1 Kalahari Anib Lodge
- 2 Kalahari Farmhouse
- 3 Canyon Lodge
- 4 Canyon Village
- 5 Canyon Roadhouse
- 6 Canyon Mountain Camp
- 7 Klein-Aus Vista – Desert Horse Inn
- 8 Klein-Aus Vista – Eagle's Nest Chalets
- 9 Namib Desert Lodge
- 10 Damara Mopane Lodge
- 11 Etosha Safari Lodge
- 12 Etosha Safari Camp
- 13 Hakusembe River Lodge
- 14 Namushasha River





Gondwana Collection

NAMIBIA



Gondwana Collection - The South

1 Gondwana Kalahari Park

(Kalahari, 30 km north-east of Mariental)

The Kalahari : green acacias and yellow grass on the red sand of Kalahari dunes which extend over hundreds of kilometres. Gondwana Kalahari Park provides you with unforgettable impressions of the world's largest continuous stretch of sand. The park covers 100 km² and is situated 30 km northeast of Mariental. Animals like springbok, oryx antelope and ostrich as well as jackal, hare and porcupine inhabit the dunes and dune valleys. Experience the magic of the Kalahari on a hiking tour or on a nature drive around the park.

Kalahari Anib Lodge (On the C20 tar road between Mariental and Stampriet)

Kalahari Anib Lodge lies like a lush green oasis in the midst of red Kalahari dunes. The restaurant and chalets are arranged around a shaded courtyard with a large swimming pool. 36 rooms with a private veranda are available for tour groups. For individual travellers there are 19 rooms, set slightly apart, with views of the open savannah and with a separate swimming pool. Camping guests are catered for as well: three exclusive sites are equipped with private bathrooms and barbecue facilities. Located about 30 km northeast of Mariental, the lodge makes for a perfect stopover on the way south.

Kalahari Anib Lodge	Rates valid 01.01.14 - 30.06.14	01.07.14 - 31.12.14
N\$ per person in a double room with breakfast / night	685.00	920.00
N\$ per person in a single room with breakfast / night	855.00	1150.00
Dinner	230.00	230.00
Kalahari Anib Campsite N\$ pp / night (max 4 pax per site)	150.00	150.00

Activities in Gondwana Kalahari Park:

Morning or Sundowner Drive:

This is the perfect way of getting acquainted with the Kalahari Desert. The Morning or Sundowner Drive with panoramic views across the Kalahari dunes is something to remember forever.
Approx. 3 hours, N\$ 365.00 pp (rate valid from 01.01.2014 until 31.12.2014)

Hiking Trails:

Explore the Kalahari on foot and on your own initiative. A trail map is available at the reception.

Kalahari Anib Lodge



Kalahari Farmhouse





Gondwana Collection

NAMIBIA



2 Stampriet

(Kalahari, 53 km north-east of Mariental)

Kalahari Farmhouse (53 km north-east of Mariental in Stampriet)

Located in the midst of the Kalahari, on the fringes of the village of Stampriet, Kalahari Farmhouse combines upmarket hospitality with a rural ambience. The reception and restaurant are housed in a historic farmhouse, built decades ago in the heyday of Karakul farming. The small farming business next-door keeps the kitchen stocked with fresh produce for the delicious dishes on the menu. Accommodation is in 11 tastefully decorated, air-conditioned chalets reminiscent of the Cape Dutch style. Enjoy the serene tranquillity at the pool, visit the farming business or join a scenic drive in Gondwana Kalahari Park, just 30 km away.

Kalahari Farmhouse	Rates valid 01.01.14 - 30.06.14	01.07.14 - 31.12.14
N\$ per person in a double room with breakfast / night	685.00	920.00
N\$ per person in a single room with breakfast / night	855.00	1150.00
Dinner	230.00	230.00
Kalahari Anib Campsite N\$ pp / night (max 4 pax per site)	150.00	150.00

3 Gondwana Canyon Park

(Fish River Canyon)

The Nama Karoo: yellow flowers of quiver trees against the blue sky at the second largest canyon on earth. With an area of 1,260 km² Gondwana Canyon Park is the largest and oldest nature reserve of the Gondwana Collection. Nowhere else in southern Namibia are animals found in similar numbers and diversity. Species which once used to roam the area, like hartebeest, Burchell's zebra, mountain zebra and ostrich. Explore the natural diversity of the Nama Karoo Desert – on foot or by car.

Canyon Lodge (on the C 37; 20 km from the Canyon's main lookout point)

Canyon Lodge in Gondwana Canyon Park is just 20 km away from the Fish River Canyon. 25 natural stone chalets with air conditioning, en suite bathroom and thatched roofs, nestle between massive granite boulders and convey a sense of living in the lap of nature. Enjoy delicious meals at the restaurant and be transported to the pioneering days of farming by the carefully arranged décor. Read a book at leisure on the terrace shaded by trees or relax at the swimming pool with vistas extending beyond the Fish River Canyon.

Canyon Lodge	Rates valid 01.01.14 - 30.06.14	01.07.14 - 31.12.14
N\$ per person in a double room with breakfast / night	895.00	1200.00
N\$ per person in a single room with breakfast / night	1120.00	1500.00
Dinner	230.00	230.00

Fish River Canyon



Canyon Lodge





Gondwana Collection

NAMIBIA



Canyon Village (on the C 37; 20 km from the Canyon's main lookout point)

Canyon Village lies at the foot of a sweeping rock face in Gondwana Canyon Park. Well-appointed cottages (with air conditioning) in the Cape Dutch style afford views of the vast canyon scenery. The thatched main building is built right into the massive granite boulders and houses a restaurant and cosy bar. With the famous Fish River Canyon just 20 km away the village is a perfect starting point for exploring the canyon. Dozens of murals depict the history and culture of the Bondelswart Nama, the earlier inhabitants of this area. Relish the peace and quiet and enjoy the views at the 'pool with a view'.

Canyon Village	Rates valid 01.01.14 - 30.06.14	01.07.14 - 31.12.14
N\$ per person in a double room with breakfast / night	685.00	920.00
N\$ per person in a single room with breakfast / night	855.00	1150.00
Dinner	230.00	230.00

Canyon Roadhouse (on the C 37; 20 km from the Canyon's main lookout point)

Due to its elaborate décor Canyon Roadhouse has acquired a cult status of sorts in Namibia: the good old days of the automobile are celebrated in the theme restaurant and bar. Enjoy a slice of our legendary Amarula cheese-cake and other delicious dishes among coachwork arranged with loving care. The geology, flora, fauna and history of the area are explained on display boards at the Canyon Information Centre. Situated directly on the road to the Fish River Canyon, 14 km from the gate to the viewing points, Canyon Roadhouse offers 24 immaculate en-suite rooms with air conditioning, a swimming pool, campsite and a petrol station.

Canyon Roadhouse	Rates valid 01.01.14 - 30.06.14	01.07.14 - 31.12.14
N\$ per person in a double room with breakfast / night	685.00	920.00
N\$ per person in a single room with breakfast / night	855.00	1150.00
Dinner	230.00	230.00
Canyon Road Campsite N\$ pp / night	150.00	150.00

Canyon Mountain Camp (on the C 37; 26 km from the Canyon's main lookout point)

Just 26 km away from awe-inspiring Fish River Canyon, unpretentious Canyon Mountain Camp is the alternative for the more adventurous traveller. Relish the solitude amongst picturesque dolerite hills. Canyon Mountain Camp is well suited for self-catering. Apart from a fully equipped kitchen and lounge, guests have a lapa (shaded terrace) and barbecue area at their disposal. If you don't feel like cooking you can always come and spoil yourself at the restaurant at Canyon Lodge, just 6 km away.

Canyon Mountain Camp only for groups	Rates valid 01.01.14 - 31.12.14
N\$ per person / BED only	310.00 - for group bookings only

Canyon Village



Canyon Roadhouse



Canyon Mountain Camp





Gondwana Collection

NAMIBIA



Activities in Gondwana Canyon Park:

All activities start from Canyon Lodge or Canyon Village. Guests of all the accommodation establishments in Gondwana Canyon Park are welcome to participate. Activities are subject to availability; prices may vary.

Sunrise Walk:

We drive you to a spot with a grand view and watch the sunrise while enjoying coffee and tea. Then we walk back the short distance to the lodge.

Approx. 1 hour, N\$ 125.00 pp (rate valid from 01.01.2014 until 31.12.2014)

Morning Hike:

This hike (about 6 km) takes you right into Gondwana Canyon Park. You are accompanied by a guide who will gladly share his knowledge about the fascinating desert landscape around the canyon.

Approx. 3 hours, N\$ 255.00 pp (rate valid from 01.01.2014 until 31.12.2014)

Trail from the Village to the Lodge:

A hiking trail takes you from Canyon Village up to a mountain plateau with a breathtaking view of the vast plains adjacent to the canyon. At 'Archway Rock' you start to make your way back into the plain and to the lodge. (2 - 3 hours)

Canyon Drive:

Especially for guests who want a break from the wheel or those on a fly-in safari. You are taken to the two major lookout points along the Fish River Canyon. Our guide will tell you all about the canyon's fascinating geology.

Approx. 3 hours, N\$ 650.00 pp (rate valid from 01.01.2014 until 31.12.2014)

Sundowner Drive in Gondwana Canyon Park:

Starting at Canyon Lodge or Canyon Village - The three-hour drive is the perfect opportunity for you to acquaint yourself with Gondwana Canyon Park. You will learn useful and fascinating facts about the geology and the adaptability of flora and fauna in Gondwana Canyon Park. This tour does not include the Fish River Canyon.

Approx. 3 hours, N\$ 365.00 pp (rate valid from 01.01.2014 until 31.12.2014)

Sundowner Walk:

Everyone is invited to wrap up the day with a short excursion to our very own 'local' mountain where we have a drink and watch the sun go down.



Gondwana Collection

NAMIBIA



4 Gondwana Sperrgebiet Rand Park

(Aus, 115 km from Lüderitz)

The Succulent Karoo: after soft winter rains a sea of bright flowers in the vast plains of the southern Namib. In Gondwana Sperrgebiet Rand Park near Aus you experience the most bio-diverse desert on earth. It is a landscape of granite mountains, dry riverbeds and sweeping plains. To the east the park (510 km²) borders on the Nama Karoo, and to the north on the dune sea of the Namib where the Wild Horses roam. Explore the park on our hiking trails - and join us on a scenic drive to see the unique flora and the fascinating Wild Horses. Lüderitz and Kolmanskop are no more than an hour's drive away.

Reservations: Tel: ++264 – (0) 63 - 258116 • Fax: ++264 – (0) 63 - 258021, reservations@klein-aus-vista.com

Klein-Aus Vista: Desert Horse Inn (3 km west of Aus on the B4)

Located in the Aus Mountains at 1400 metres above sea level, Desert Horse Inn affords grand vistas of mountain scenery and sweeping desert plains. It consists of 24 spacious and tastefully decorated en suite rooms. Relax with sundowners on the wooden deck before enjoying a 3-course meal in the restaurant. Exchange travel experiences and recommendations at the evocative Wild Horse Bar or at the cosy fireplace in the lounge.

Geisterschlucht Cabin is available for self-catering travellers. The two dormitories sleep 10 each (6 km from the Inn); Desert Horse Campsite (1.5km) consists of ten separate sites.

Klein-Aus Vista, Desert Horse Inn	Rates valid 01.01.14 - 30.06.14	01.07.14 - 31.12.14
N\$ per person in a double room with breakfast / night	655.00	865.00
N\$ per person in a single room with breakfast / night	820.00	1075.00
Dinner	225.00	225.00
Geisterschlucht Cabin (Selfcatering) from N\$ pp / BED only	185.00 pp for groups larger than 3 ; otherwise min. rate 575.00	185.00 pp for groups larger than 3 ; other- wise min. rate 575.00
Desert Horse Campsite N\$ per person / night	100.00	100.00

Klein-Aus Vista: Eagle's Nest Chalets (3 km west of Aus on the B4)

Solitude, silence, space and magnificent sunsets - these are the characteristics of the atmosphere at Eagle's Nest Chalets. A 15-minute drive from the reception at the Desert Horse Inn, 9 chalets are nestled against a mountain slope and afford unique views of the vastness of the desert. Each of the natural rock chalets sits between massive granite boulders and contains a bathroom, kitchenette, fireplace and private veranda. Meals are served at the Desert Horse Inn restaurant. Take-away breakfast or barbecue packs are available on request.

Klein-Aus Vista, Eagle's Nest	Rates valid 01.01.14 - 30.06.14	01.07.14 - 31.12.14
N\$ per person in a double room with breakfast / night	895.00	1155.00
N\$ per person in a single room with breakfast / night	1120.00	1470.00
Dinner	225.00	225.00

Desert Horse Inn



Eagle's Nest





Gondwana Collection

NAMIBIA



Activities in Gondwana Sperrgebiet Rand Park:

Activities: advanced booking for half day and daytrips required, subject to availability; prices may vary.

Scenic Sunset Drive:

These drives in the late afternoon present an opportunity to experience the incredible scenic beauty of Gondwana Sperrgebiet Rand Park at dawn.

N\$ 290.00 pp (min. 3 persons per excursion) (rate valid from 01.01.2014 until 31.12.2014)

Desert Tour (leaving early in the morning):

Discover the delights of the desert: guided tours through the impressive scenery of the Succulent Karoo desert.

Half Day to Kubub, GSR Park N\$ 475.00 pp (min. 4 persons per excursion) (rate valid from 01.01.2014 until 31.12.2014)

Full Day to Kubub, GSR Park, Gods Window: N\$ 750.00 pp (min. 4 persons) (rate valid from 01.01.2014 until 31.12.2014)

Full Day 4x4 Self Drive: N\$ 750.00 pp (min. 4 persons) (rate valid from 01.01.2014 until 31.12.2014)

Hiking Trails / Mountain Bike Trails:

If you want to explore the flora and fauna of the Succulent Karoo desert on your own you have five different hiking trails to choose from. They are well marked and take you through the wildly romantic scenery of the Aus Mountains.

Duration: between 2 and 5 hours

Park fee: N\$ 40.00 pp

Day trip to Lüderitz and Kolmanskop:

Lüderitz is just 120 km away and the ghost town of Kolmanskop only 115 km (tar road) – Klein-Aus Vista is the ideal starting point for a trip to both places. 20 km from Aus, on the way to or back from Luderitz, visit the Garub water hole where the wild horses and several other animals of the desert plains can be found.

The Wild Horses of the Namib have roamed this harsh habitat since 1915 and are an experience one should not miss.



Gondwana Collection

NAMIBIA



5 Gondwana Namib Park

(Namib, Sossusvlei area, 60 km north of Sesriem)

The Namib Desert: pale green shrubs and trees on the banks of dry rivers against the backdrop of reddish mountains of sand. In Gondwana Namib Park (100 km²) the fossilised dunes of the ancient Namib meet the active ones of the young Namib. A sea of dunes surges in the west, while in the east vast plains reach out to distant mountains. Join a nature drive and get enticed by the desert world or explore the dunes, young and ancient, on a walk. Our park is also the perfect starting point for an excursion to famous Sossusvlei and Sesriem Canyon.

Namib Desert Lodge (On the C 19; 60 km north of Sesriem, 30 km south of Solitaire)

The main building and the chalets of Namib Desert Lodge are spread out along the foot of the fossilised dunes of the ancient Namib. A comfortable sojourn is guaranteed by 65 en-suite rooms with air conditioning. A restaurant and bar, an inviting terrace with views of the fossilised dunes and two swimming pools beckon you to linger and relax. Shaded camping sites under acacia trees at the bank of a dry riverbed are available for campers. Oryx antelope and springbok are attracted by our illuminated water hole on a regular basis.

Namib Desert Lodge	Rates valid 01.01.14 - 30.06.14	01.07.14 - 31.12.14
N\$ per person in a double room with breakfast / night	685.00	920.00
N\$ per person in a single room with breakfast / night	855.00	1150.00
Dinner	230.00	230.00
Namib Desert Campsite N\$ pp / night	150.00	150.00

Activities in Gondwana Namib Park:

Dune Drive:

Discover the fossilised dunes, the red dunes above the plateau and the many other wonders of the Namib Desert on this drive around Gondwana Namib Park.

Approx. 2-3 hours, N\$ 365.00 pp (rate valid from 01.01.2014 until 31.12.2014) Afternoon

Approx. 1.5 hours, N\$ 280.00 pp (rate valid from 01.01.2014 until 31.12.2014) Morning, min. 4 persons

Walking Trails:

Please enquire at reception.

Namib Desert Lodge





Gondwana Collection

NAMIBIA



Gondwana Collection - The North

6 Twyfelfontein & Damaraland

African savannah with shrubs and acacias, sandy dry riverbeds, massive granite mountain tops and table mountains are characteristic of the wildly romantic scenery of Damaraland. Namibia's original inhabitants carved animals and mysterious symbols into the reddish-brown sandstone at Twyfelfontein, now a World Heritage site. The Vingerklip rock stack of solidified sediments, the Organ Pipes of basalt and the tree trunks of stone on the other hand are nature's work of art. Springbok and oryx antelope graze in the savannah while the famous desert-adapted elephants move through the dry riverbeds.

Damara Mopane Lodge (On the C 39; 20 km east of Khorixas)

The lodge is generously laid out in the midst of diverse gardens of a surprisingly different kind. The main building, its walls adorned by copies of the rock engravings at Twyfelfontein, is surrounded by Mopani trees. Each of the 55 double-room chalets (with air conditioning) sits in a vegetable and herb garden surrounded by a low wall. The gardens supply fresh ingredients for supper, which consists of a hot starter followed by a buffet. There is a swimming pool for chilling out and a viewing point for relishing sunsets and the star-studded sky. This lodge at the gateway into Damaraland is ideally suited for excursions to Twyfelfontein (130km), the Petrified Forest (70km) and the Vingerklip rock stack (50km).

Damara Mopane Lodge	Rates valid 01.01.14 - 30.06.14	01.07.14 - 31.12.14
N\$ per person in a double room with breakfast / night	685.00	920.00
N\$ per person in a single room with breakfast / night	855.00	1150.00
Dinner	230.00	230.00

Second Night Special: for a 2 night stay, the following rates apply for the 2nd night

N\$ per person in a double room with breakfast / 2nd night	400.00	600.00
N\$ per person in a single room with breakfast/2nd night	500.00	750.00

Excursion to Petrified Forest, Twyfelfontein and Damara Cultural Village incl. lunch:
N\$ 1500.00 pp (min. 2 persons) (rate valid from 01.01.2014 until 31.12.2014)

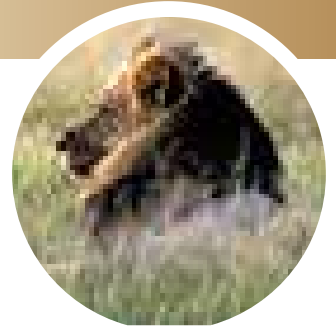
Damara Mopane Lodge





Gondwana Collection

NAMIBIA



7 Etosha National Park

Elephants taking a bath with their young, a troop of zebras filing past on their way to the water hole, herds of springbok in the savannah, a pair of lions lazing under a bush - in Etosha you experience animals in the wild. This national park covers 22,700 km² and sustains more than 110 different species of mammals and more than 230 species of birds. Named after the huge salt pan of a dried up lake (Etosha = large white place), the park was established more than a hundred years ago - which makes it one of the oldest conservation areas in Africa.

Etosha Safari Camp (On the C 38; 10 km south of Andersson Gate)

Etosha Safari Camp is situated just 10 km south of Andersson Gate on the C 38 between Outjo and Okaukuejo. 50 twin-bedded chalets nestle among Mopane trees and impart a feeling of living in the lap of African nature. Each of them is equipped with mosquito gauze, air conditioning and a small veranda. Special attractions are the Okambashu Restaurant and the Oshebeena Bar, styled like a typical little township bar and brimming with African joie de vivre. A camping site is also available for nature lovers. The camp and camping site are the perfect base for safari excursions into Etosha.

Etosha Safari Camp	Rates valid 01.01.14 - 30.06.14	01.07.14 - 31.12.14
N\$ per person in a double room with breakfast / night	580.00	775.00
N\$ per person in a single room with breakfast / night	725.00	970.00
Dinner	230.00	230.00
Etosha Safari Campsite N\$ pp / night	150.00	150.00

Activities at Etosha Safari Camp & Lodge:

Prices may vary.

Excursion to the Etosha National Park:

This guided drive with an open vehicle will take you into Etosha National Park.

Half Day: N\$ 500.00 pp (rate valid from 01.01.2014 until 31.12.2014)

Full Day: N\$ 700.00 pp (rate valid from 01.01.2014 until 31.12.2014)

Etosha Safari Camp





Gondwana Collection
NAMIBIA



Etosha Safari Lodge (On the C 38; 10 km south of Andersson Gate)

Guests rave about the view: the restaurant and chalets, situated on a hillock, offer magnificent views of the African bush savannah. All of the 65 double-room chalets are equipped with air conditioners and mosquito nets. Guests can choose between three swimming pools. Apart from the restaurant and bar there is a wooden platform for sundowners high above the Mopane bush. The Andersson Gate into Etosha National Park is a mere 9 km away. The lodge offers daily safari trips into the park.

Etosha Safari Lodge	Rates valid 01.01.14 - 30.06.14	01.07.14 - 31.12.14
N\$ per person in a double room with breakfast / night	790.00	1060.00
N\$ per person in a single room with breakfast / night	985.00	1325.00
Dinner	230.00	230.00

Activities at Etosha Safari Camp & Lodge:

Prices may vary.

Excursion to the Etosha National Park in a 10 seater vehicle:

This guided drive with an open vehicle will take you into Etosha National Park.

Half Day: N\$ 650.00 pp (rate valid from 01.01.2014 until 31.12.2014)

Full Day: N\$ 950.00 pp (rate valid from 01.01.2014 until 31.12.2014)

Etosha Safari Lodge





Gondwana Collection NAMIBIA



8 Okavango River

The Okavango River meanders through the yellow-green African landscape like a blue ribbon. Every now and then the resounding deep grunts of hippos can be heard, here and there a crocodile is sunbathing on the sandy river-bank and the continuous twittering of the colourful birdlife completes the picture. The lush northeast of Namibia forms a delightful contrast to the bush savannah, semi-desert and desert in the rest of the country. Palisade villages, artful wood carvings and cattle next to the road: welcome in the vibrant, colourful north of Namibia.

Hakusembe River Lodge (On the C 45; 16 km west of Rundu)

Picturesquely situated on the south bank of the Okavango River, 16 km west of Rundu, Hakusembe River Lodge makes for the perfect stopover on the way into Caprivi and to the Victoria Falls. The 20 chalets (with air-conditioning) offer magnificent views of the river and the lush vegetation which teems with diverse birdlife. The swimming pool invites guests to cool off on hot summer days. Experience the river world on a boat trip. Relish the enchanting atmosphere during dinner in the restaurant and with a drink at the bar. A campsite is also available.

Hakusembe River Lodge	Rates valid 01.01.14 - 30.06.14	01.07.14 - 31.12.14
N\$ per person in a double room with breakfast / night	685.00	920.00
N\$ per person in a single room with breakfast / night	855.00	1150.00
Dinner	230.00	230.00
Hakusembe Campsite N\$ pp / night	150.00	150.00

Activities at Hakusembe River Lodge

(additional seasonal activities offered, please enquire at bookings@gondwana-collection.com):

Tiger Fishing with skipper & equipment on the Hakusembe River Queen:
per hour N\$ 220.00 pp (rate valid from 01.01.2014 until 31.12.2014), min. 2 persons

Sunset Champagne Cruise (incl 1/2 bottle of Champagne pp):
N\$ 265.00 pp (rate valid from 01.01.2014 until 31.12.2014)

African Cultural Experience

Evening with UKUMWE (group of drummers and dancers) during or after dinner:
Prebooking essential Rate on request

Hakusembe River Lodge





Gondwana Collection

NAMIBIA



9 Caprivi

Flowing rivers, dense shrubs and trees, iridescent birds of all colours – in Eastern Caprivi the fascinating subtropical face of Namibia reveals itself. The main attraction of this region is the abundance of game in the river scenery. With a little luck you will see elephant, buffalo, crocodile and scores of antelope on your scouting trip by boat or by car. Stand on the banks of the mighty Zambezi River on the eastern border of the Caprivi Strip. The river's masses of water plunge down more than 100 metres at the Victoria Falls, creating one of the biggest natural wonders on earth.

Namushasha River Lodge (On the C 49; 24 km south of Kongola)

As the evening sky turns into a red glow you sit back, high above the river, enjoying a chilled drink while listening to the deep grunt of hippos – this experience awaits you on the sundowner deck of Namushasha River Lodge on the Kwando River. Situated 25 km south of Kongola on the C 49, the lodge is the ideal base to explore the Eastern Caprivi. Apart from 24 chalets it consists of a restaurant, a bar and a swimming pool. Watch elephant, hippo, buffalo or sable antelope on our excursions by boat and off-road vehicle or take time to observe the colourful birdlife. A camping site with rolling lawns is also available.

Namushasha River Lodge	Rates valid 01.01.14 - 30.06.14	01.07.14 - 31.12.14
N\$ per person in a double room with breakfast / night	685.00	920.00
N\$ per person in a single room with breakfast / night	855.00	1150.00
Dinner	230.00	230.00
Namushasha River Campsite N\$ pp / night	150.00	150.00

Activities at Namushasha River Lodge:

(additional seasonal activities offered, please enquire at bookings@gondwana-collection.com)
Activities are subject to availability; prices may vary.

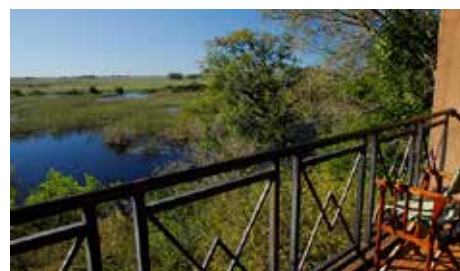
Game Drive - Bwabwata National Park:

Approx. 3 hours N\$ 365.00 pp (rate valid from 01.01.2014 until 31.12.2014)

Boat Trip: N\$ 365.00 pp (rate valid from 01.01.2014 until 31.12.2014)

Fishing Trip: per hour N\$ 220.00 pp (rate valid from 01.01.2014 until 31.12.2014)
(incl. tackle; loss of lures will be N\$ 50.00 each)

Namushasha River Lodge





Gondwana Collection

NAMIBIA

General Terms and Conditions

Payment Conditions

for clients booking directly:
The full amount as per quote must be paid 30 days prior to arrival date.

Children Policy

Children are most welcome at all our venues. Children up to 5 years old are free of charge; for children between the ages of 6 and 13 years we charge 50 per cent of the B&B rate. For the children policy of Klein-Aus Vista please enquire with their reservations team.

Cancellation Fees

more than 28 days before arrival -	10%
22 - 28 days before arrival -	20%
15 - 21 days before arrival -	30%
8 - 14 days before arrival -	50%
4 - 7 days before arrival -	75%
1 - 3 days before arrival -	90%

We are looking forward to welcoming you!

